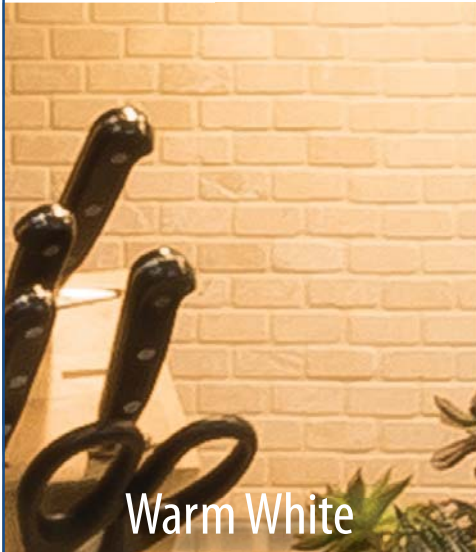




# LED Task Star Pro

## COLOUR CHANGEABLE

**UNDER CABINET LIGHTING**  
PRO-SERIES LED  
2,700K - 5,000K LEDs,  
DIMMABLE  
LTSPRO-12/18/24/32  
cETLus LISTED



Warm White



White



Cool White

LTSPRO is constructed with aluminum housing and a matte white polycarbonate diffuser. It has a hi-low rocker switch and a slide selector switch for changing Kelvin colour temperature. This sleek fixture features edge lit technology which means no hot spots on the polished marble or granite counter top. 1 inch low profile design means the fixture remains hidden. The quality of light is the best in the industry with a 90 colour rendering index (CRI) and up to 60 lumens per watt. Rated to 50,000 hours and dimmable with most ELV dimmers, LTSPRO is the most versatile task light on the market today. Ships complete with captive mounting screws, cord and plug, end to end connector and romex connector for hardwire.

### Features

- ✓ Adjustable to 3 colour temperatures: 2700K, 3300K and 5000K (warm white to cool white)
- ✓ Dimmable with most ELV dimmers
- ✓ Comes with High / Low Switch
- ✓ Low power consumption
- ✓ Edge Lit technology eliminates hot spots – smooth luminance
- ✓ Fast and easy installation – quick connects, captive mounting screws
- ✓ Comes with cord and plug as well as knockouts for hardwire
- ✓ 3/8" connector provided
- ✓ Shallow profile conceals fixture
- ✓ Linkable up to 400 watts
- ✓ 90 CRI – the best in the business!
- ✓ Available in 4 sizes 12", 18", 24" and 32"
- ✓ 3 year limited warranty
- ✓ cETLus and EnergyStar listed

### Available in 4 colours:

White, Bronze,  
Satin Nickel  
& Black



### Applications

- Under cabinet task light
- Over cabinet accent light
- Display cases and exhibits
- Merchandising
- Indirect accent light
- Wall units and bars
- Office work stations



1150 Northside Road, Unit 14, Burlington, ON, Canada L7M 1W8  
Tel: 905-825-9592 • Fax: 905-825-8334 • [lights@magiclite.com](mailto:lights@magiclite.com)

[magiclite.com](http://magiclite.com)



# LED Task Star Pro – COLOUR CHANGEABLE

## Construction

Housing is made from extruded aluminum. End caps are molded from high impact PC plastic.

## Finish

White, Black, Bronze, and Satin Nickel finish

## Diffuser

Matte white polycarbonate diffuser slides into housing.

## Electrical

This unit is wired for 120V operation. High/low switch included.

## Lamping

LED's are 2700K, 3300K, 5000K non-replaceable. Rated for 50,000 hrs. 90+ CRI.

## Certification

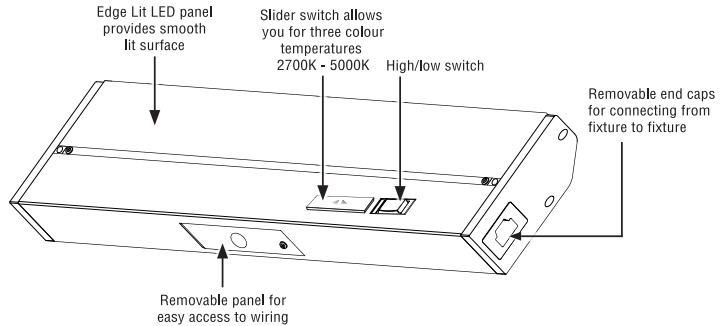
Fixtures are cETLus listed for dry locations.

## Warranty

**Limited warranty:** This fixture is free from defects in materials and workmanship for a period of 3 years from date of purchase.

### The following accessories are included with each fixture:

- (1) Under cabinet lighting fixture
- (1) Romex connector
- (1) 182.88 cm cord and plug
- (2) Wood screws
- (1) End-to-end connector



## Specifications

Size	Code	Watt	Lumens	Dimming	L	W	H
30.48cm	LTSPRO-12-YY	5W	250-300	Yes	30.48cm	8.89cm	2.54cm
45.72cm	LTSPRO-18-YY	8W	380-450	Yes	45.72cm	8.89cm	2.54cm
60.96cm	LTSPRO-24-YY	12W	650-700	Yes	60.96cm	8.89cm	2.54cm
81.28cm	LTSPRO-32-YY	16W	850-900	Yes	81.28cm	8.89cm	2.54cm

YY = Finish Colour: BK - Black, BZ - Bronze, SN - Satin Nickel, WH - White

Specifications and dimensions subject to change without notice.

<b>Colour Rendering Index</b>	90+
<b>Input Power</b>	120V
<b>Colour Temperature</b>	700K-5000K
<b>LEDs</b>	Epistar
<b>Power Factor</b>	0.95

Accessories (Ordered Separately)	
LTSPRO-J-12	30.48cm jumper cable
LTSPRO-J-18	45.72cm jumper cable
LTSPRO-J-24	60.96cm jumper cable
LTSPRO-J-32	81.28cm jumper cable
LTSPRO-PC-72	182.88cm replacement power cord and plug



1150 Northside Road, Unit 14, Burlington, ON, Canada L7M 1W8

Tel: 905-825-9592 • Fax: 905-825-8334 • lights@magiclite.com

magiclite.com